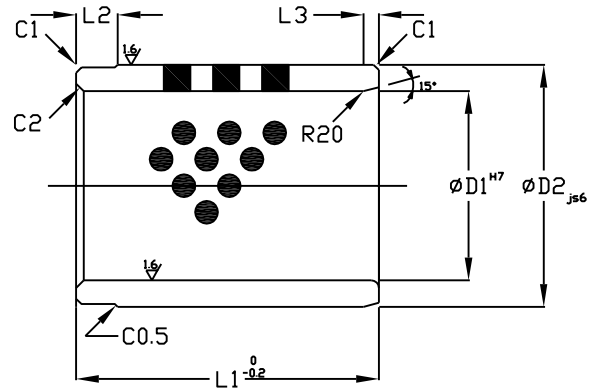




商帥企業有限公司

BF Bearing Enterprise



Straight Guide Bushing - Self-Lubricating							
BF Bearing Code	D1	D1 Tol H7	D2	D2 Tol js6	L1 Overall Length	L2	L3
50AGB-356055	35	+0.025 0	60	± 0.095	55	15	5
50AGB-406055	40		70		75		
50AGB-507075	50		80		90		
50AGB-608090	60	+0.030 0	100	± 0.011	120	25	10
50AGB-80100120	80		120		150		
50AGB-100120150	100	+0.035 0	140	± 0.0125	180		
50AGB-120140180	120						

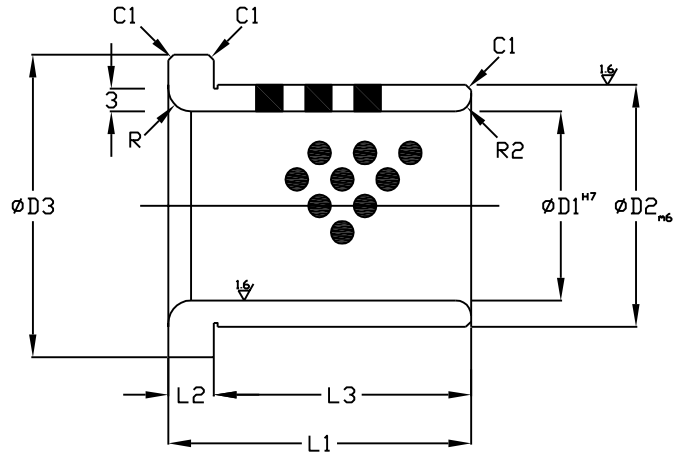
NOTE:

Evenly distributed graphite to cover 20-30% of the sliding surface.
 Graphite to be positioned to insure overlapping in the sliding direction.
 Bushings require initial lubrication with light oil. Do not use grease!



商帥企業有限公司

BF Bearing Enterprise



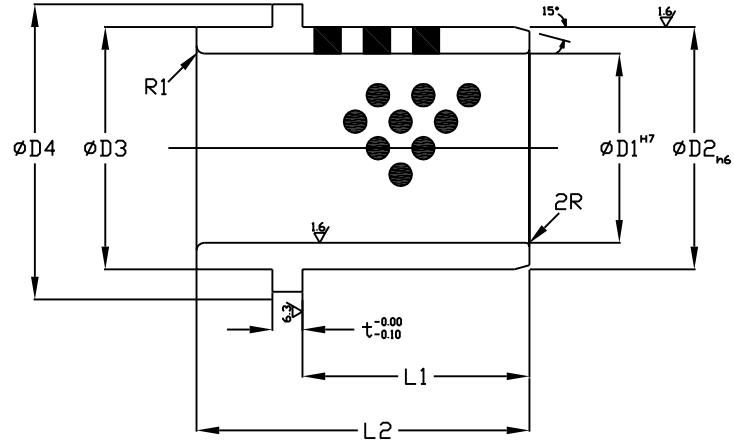
Shoulder Guide Bushing - Self-Lubricating									
BF Bearing Code	D1	D1 Tol H7	D2	D2 Tol m6	D3	L1 Overall Length	L2	L3	R
50AGF-253540	25	+0.021	35	+ 0.025	45	40	7	33	10
50AGF-304050	30	0	40	+ 0.009	50	50	10	40	20
50AGF-405570	40	+0.025	55	+ 0.030 + 0.011	65	70		60	
50AGF-506580	50	0	65		75	80		70	
50AGF-607580	60	+0.030 0	75		85	80		70	
50AGF-658080	65		80	90	120	110			
50AGF-80100100	80		100	110	100	90			
50AGF-80100140			140		130				
50AGF-100120100	100	+0.035 0	120	+ 0.035 + 0.013	130	100		90	
50AGF-100120140					140	130			

NOTE:

Evenly distributed graphite to cover 20-30% of the sliding surface.
 Graphite to be positioned to insure overlapping in the sliding direction.
 Bushings require initial lubrication with light oil. Do not use grease!



商帥企業有限公司 BF Bearing Enterprise



Ejector Bronze Guide Bushing - Self Lubricating

BF Bearing Code	D1	D1 Tol H7	D2	D2 Tol h6	D3	D4	t	L1	L2 Overall Length
50AGE-132225	13	+0.018 +0.000	22	-0.000 -0.013	22	25	4	14	25
50AGE-162525	16		25		25	28		19	33
50AGE-162533	20	+0.021 +0.000	30	30	33	14		25	
50AGE-203025						19		33	
50AGE-203033						19		38	
50AGE-203038						24		43	
50AGE-203043	25	35	35	38	14	25			
50AGE-253525					19	33			
50AGE-253533					19	38			
50AGE-253538					24	43			
50AGE-253543	30	40	40	43	24	53			
50AGE-253553					19	33			
50AGE-304033					19	38			
50AGE-304038					24	43			
50AGE-304043	35	45	45	48	29	53			
50AGE-304053					24	38			
50AGE-354538					24	43			
50AGE-354543					29	53			
50AGE-354553	40	55	55	61	39	68			
50AGE-354568					24	43			
50AGE-405543					29	53			
50AGE-405553					29	53			
50AGE-405568	50	65	65	71	39	68			
50AGE-506553					29	53			
50AGE-506568					29	53			

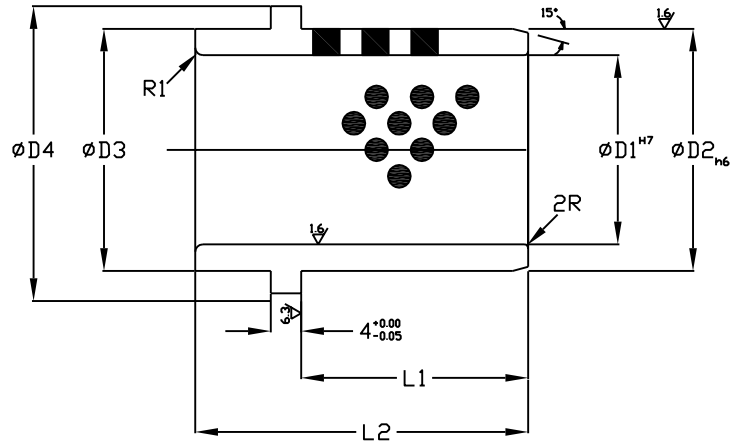
NOTE:

Evenly distributed graphite to cover 20-30% of the sliding surface.
 Graphite to be positioned to insure overlapping in the sliding direction.
 Bushings require initial lubrication with light oil. Do not use grease!



商帥企業有限公司

BF Bearing Enterprise



Short Ejector Bronze Guide Bushing - Self Lubricating								
BF Bearing Code	D1	D1 Tol H7	D2	D2 Tol h6	D3	D4	L1	L2 Overall Length
50ASE-132210	13	+0.018 +0.000	22	- 0.000 - 0.013	22	25	10	24
50ASE-132213							13	27
50ASE-132215							15	29
50ASE-162513	16	+0.021 +0.000	25	- 0.000 - 0.016	25	28	13	27
50ASE-162515							15	29
50ASE-162520							20	34
50ASE-203013	20	+0.021 +0.000	30	- 0.000 - 0.016	30	33	13	27
50ASE-203015							15	29
50ASE-203020							20	34
50ASE-253515	25	+0.021 +0.000	35	- 0.000 - 0.016	35	38	15	29
50ASE-253520							20	34
50ASE-253525							25	39
50ASE-304015	30	+0.025 +0.000	40	- 0.000 - 0.019	40	43	15	34
50ASE-304020							20	39
50ASE-304025							25	44
50ASE-354520	35	+0.025 +0.000	45	- 0.000 - 0.019	45	48	20	44
50ASE-354525							25	49
50ASE-405220	40	+0.025 +0.000	52	- 0.000 - 0.019	52	55	20	44
50ASE-405225							25	49
50ASE-405230							30	54
50ASE-506225	50	+0.025 +0.000	62	- 0.000 - 0.019	62	65	25	49
50ASE-506230							30	54

NOTE:

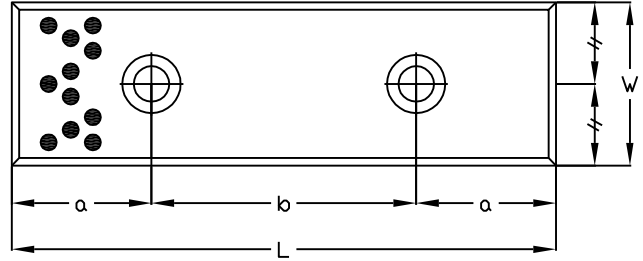
Evenly distributed graphite to cover 20-30% of the sliding surface.
 Graphite to be positioned to insure overlapping in the sliding direction.
 Bushings require initial lubrication with light oil. Do not use grease!



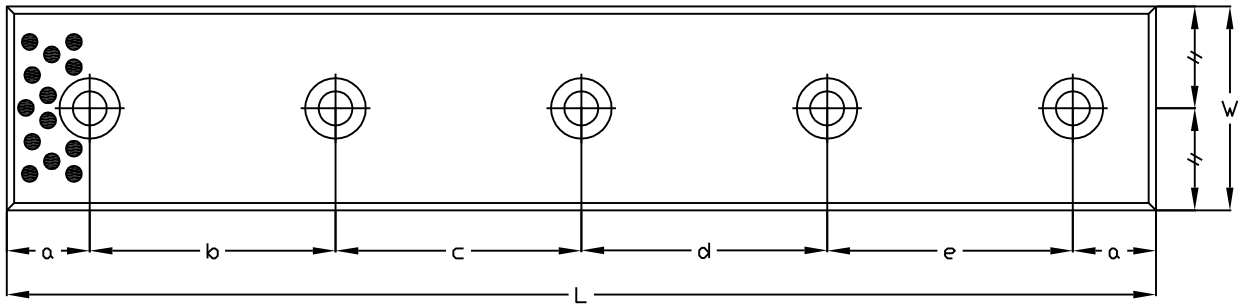
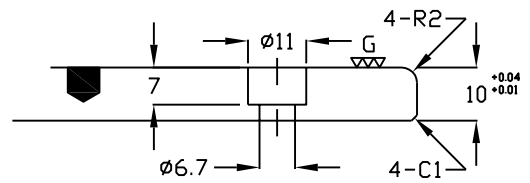
商帥企業有限公司

BF Bearing Enterprise

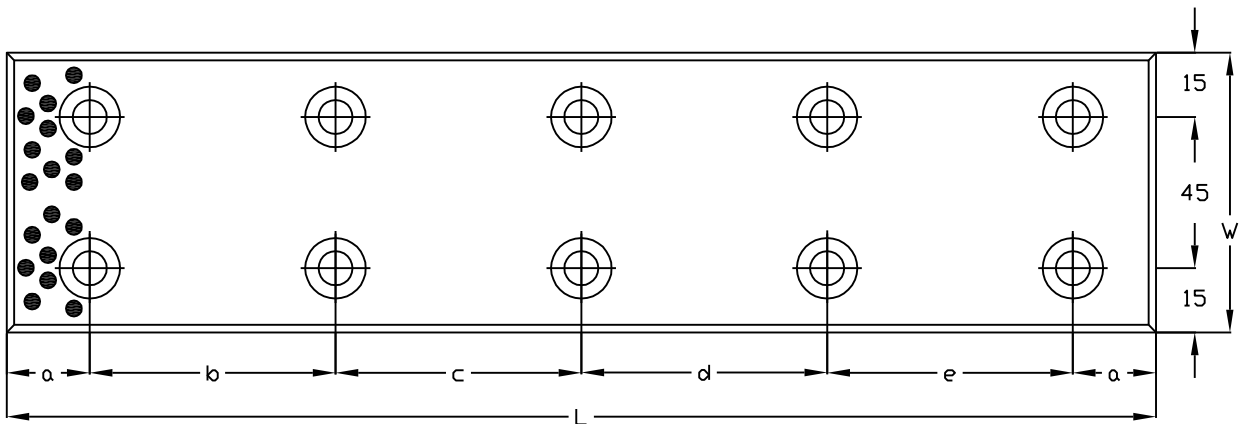
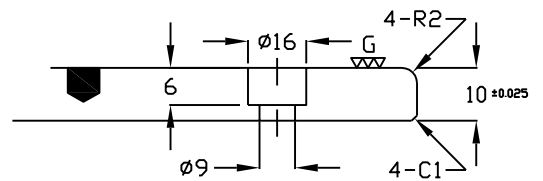
WEAR PLATE - AFP



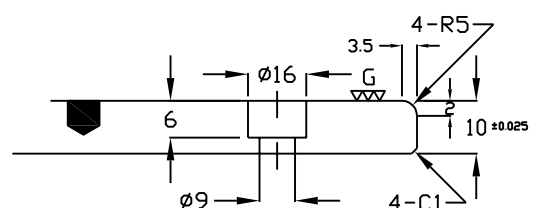
TYPE A



TYPE B



TYPE C





商帥企業有限公司

BF Bearing Enterprise

Wear Plate - Self-Lubricating										
BF Bearing Code	W	L	a	b	c	d	e	No. Tap	Tap Size	Type
50AFP-1875	18	75	25	45				2	M6	TYPE A
50AFP-18100		100		50						
50AFP-18125		125		75						
50AFP-18150		150		100						
50AFP-2875	28	75	25	45				2	M6	TYPE A
50AFP-28100		100		50						
50AFP-28125		125		75						
50AFP-28150		150		100						
50AFP-35100	35	100	20	60				3	M8	TYPE B
50AFP-35150		150		55	55					
50AFP-35200		200		55	50	55				
50AFP-35250		250		70	70	70				
50AFP-35300		300		65	65	65	65			
50AFP-35350		350		80	75	75	80			
50AFP-3875	38	75	25	45				2	M6	TYPE A
50AFP-38100		100		50						
50AFP-38125		125		75						
50AFP-38150		150		100						
50AFP-4875	48	75	25	45				2	M6	TYPE A
50AFP-48100		100		50						
50AFP-48125		125		75						
50AFP-48150		150		100						
50AFP-50100	50	100	20	60				3	M8	TYPE B
50AFP-50150		150		55	55					
50AFP-50200		200		55	50	55				
50AFP-50250		250		70	70	70				
50AFP-50300		300		65	65	65	65			
50AFP-50400		400		90	90	90	90			
50AFP-75150	75	150	20	110				4	M8	TYPE C
50AFP-75200		200		80	80					
50AFP-75250		250		105	105					
50AFP-75300		300		85	90	85				
50AFP-75400		400		120	120	120				
50AFP-75500		500		115	115	115	115			
								10		

NOTE:

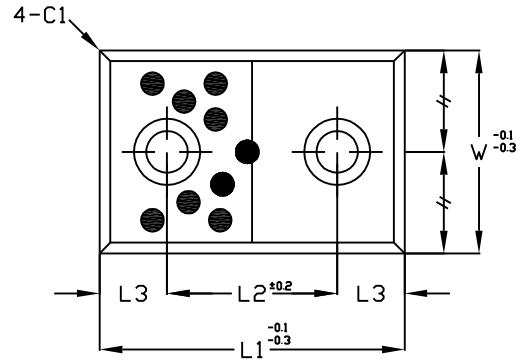
Evenly distributed graphite to cover 20-30% of the sliding surface.
 Graphite to be positioned to insure overlapping in the sliding direction.
 Bushings require initial lubrication with light oil. Do not use grease!



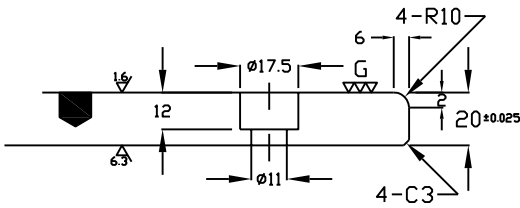
商帥企業有限公司

BF Bearing Enterprise

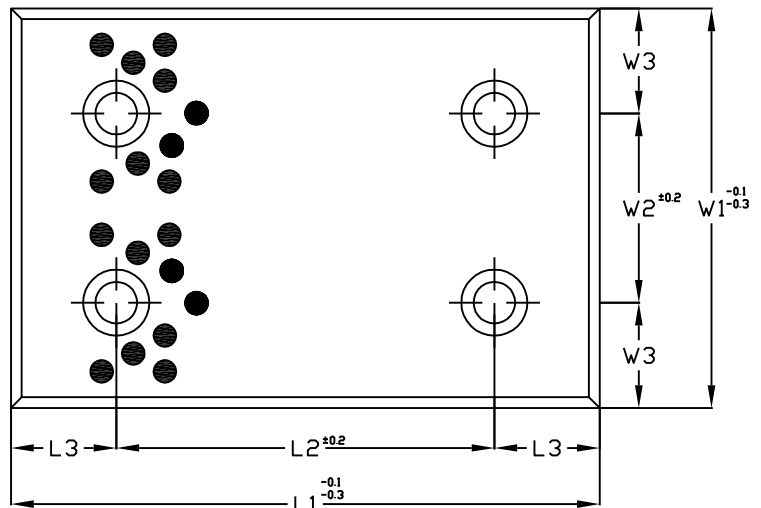
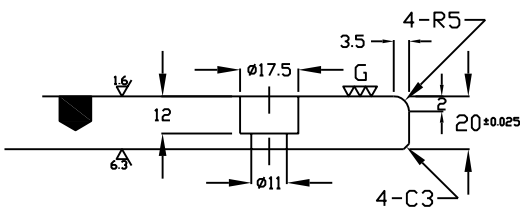
WEAR PLATE - AWP



TYPE A



TYPE B



Wear Plate - Self-Lubricating

BF Bearing Code	W1	L1	W2	W3	L2	L3	No. Tap	Chamfer Type
50AWP-4875	48	75	-	-	45	15	2	TYPE B
50AWP-48100		100			50			
50AWP-48125		125			75			
50AWP-48150		150			100			
50AWP-7575	75	75	-	-	25	25	2	TYPE A
50AWP-75100		100			50			
50AWP-75125		125			75			
50AWP-75150		150			100			
50AWP-75200		200			150			



商帥企業有限公司

BF Bearing Enterprise

Wear Plate - Self-Lubricating								
BF Bearing Code	W1	L1	W2	W3	L2	L3	No. Tap	Chamfer Type
50AWP-100100	100	100	50	25	50	25	4	TYPE A
50AWP-100125		125			75			
50AWP-100150		150			100			
50AWP-100200		200			150			
50AWP-100250		250			200			
50AWP-125150	125	150	100	37.5	100	25	4	TYPE A
50AWP-125200		200			150			
50AWP-125250		250			200			
50AWP-150150	150	150	100	25	100	25	4	TYPE A
50AWP-150200		200			150			
50AWP-150250		250			200			

NOTE:

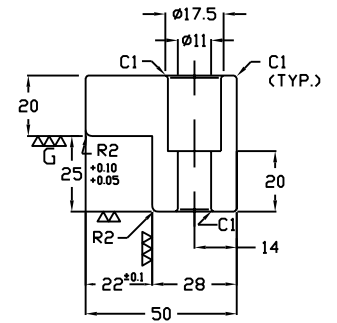
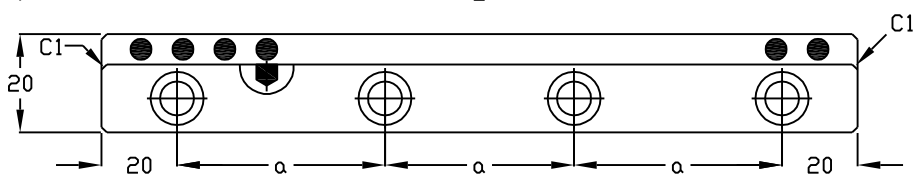
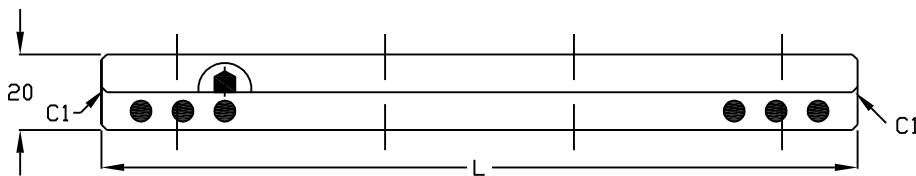
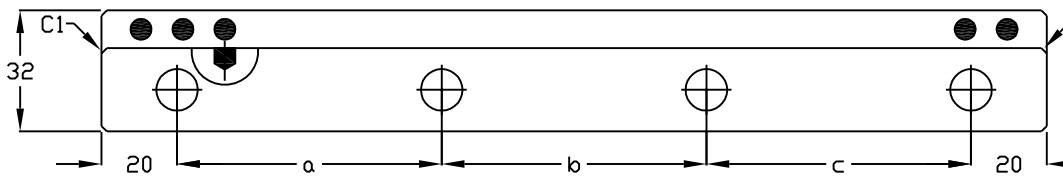
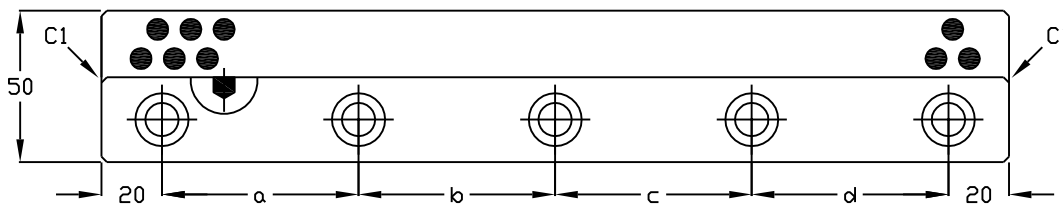
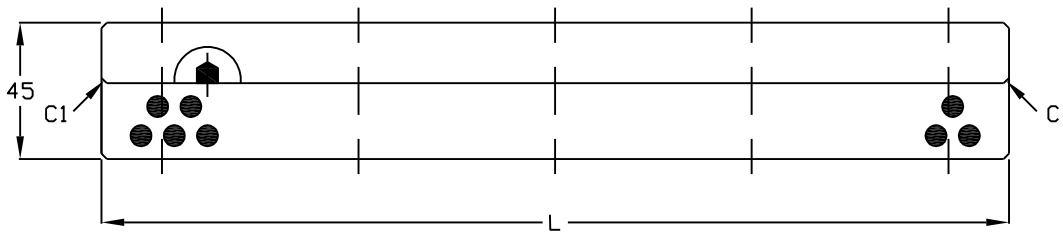
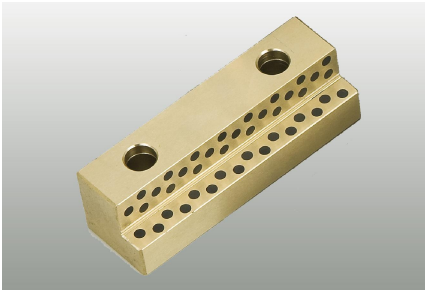
Evenly distributed graphite to cover 20-30% of the sliding surface.
Graphite to be positioned to insure overlapping in the sliding direction.
Bushings require initial lubrication with light oil. Do not use grease!



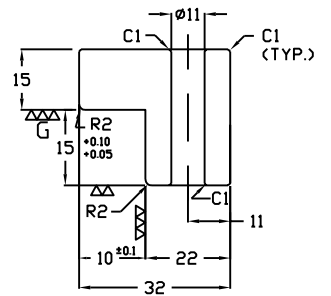
商帥企業有限公司

BF Bearing Enterprise

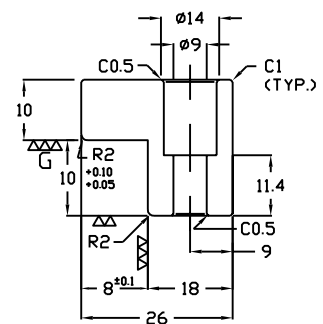
L-Gibs - ALP



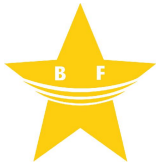
TYPE A



TYPE B



TYPE C



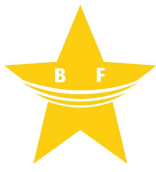
商帥企業有限公司

BF Bearing Enterprise

L-Gibs - Self-Lubricating								
BF Bearing Code	Type	L	a	b	c	d	No. Tap	Tap Size
50ALP-26100C	Type C	100	60				2	M8
50ALP-26150C		150	55	55			3	
50ALP-26200C		200		50	55		4	
50ALP-32100B	Type B	100	60				2	M10
50ALP-32150B		150	55	55			3	
50ALP-32200B		200		50	55		4	
50ALP-32250B		250	70	70	70			
50ALP-50200A	Type A	200	55	50	55		4	
50ALP-50250A		250	70	70	70			
50ALP-50300A		300	65	65	65	65	5	
50ALP-50350A		350	80	75	75	80		

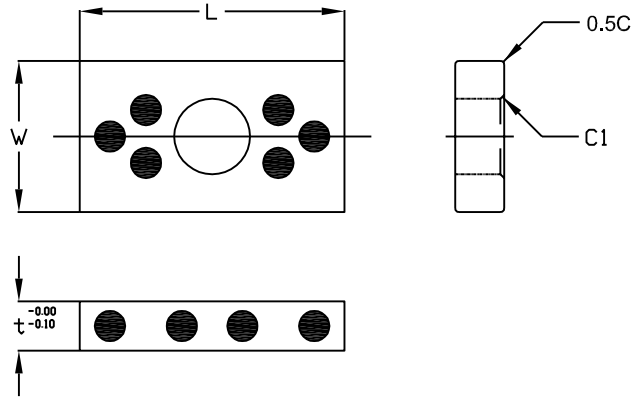
NOTE:

Evenly distributed graphite to cover 20-30% of the sliding surface.
 Graphite to be positioned to insure overlapping in the sliding direction.
 Bushings require initial lubrication with light oil. Do not use grease!



商帥企業有限公司

BF Bearing Enterprise



Slide Plate - Self-Lubricating					
BF Bearing Code	W	W Tol	L	L Tol	t
50ASE-2035	20	-0.020 -0.040	35	+ 0.200 - 0.200	6.5
50ASE-2040	20		40		6.5
50ASE-2440	24		40		6.5
50ASE-2645	26		45		7.0
50ASE-3055	30		55		7.5

NOTE:

Evenly distributed graphite to cover 20-30% of the sliding surface.
 Graphite to be positioned to insure overlapping in the sliding direction.
 Bushings require initial lubrication with light oil. Do not use grease!